

2024 Business Plan Presentation

Judicial Budget Committee

Superior Court

Judge R. Timothy Hamil, Chief
Judge Tadia Whitner
Judge Tracey D. Mason

State Court

Judge Carla E. Brown, Chief
Judge Shawn F. Bratton

Magistrate Court

Judge Kristina Hammer Blum, Chief



Gwinnett
Judicial Circuit



Superior Court

Criminal: Has jurisdiction over both misdemeanor and felony crimes, which are prosecuted by the Gwinnett County District Attorney's Office.

Civil: Has general jurisdiction over all civil cases and exclusive jurisdiction over cases involving title to land, equity, declaratory judgment, extraordinary writs, adoptions, custody, and divorce.

Superior Court



State Court

Criminal: Has jurisdiction over misdemeanor crimes and traffic violations, which are prosecuted by the Gwinnett County Solicitor's Office.

Civil: Except where Superior Court has exclusive jurisdiction, State Court has jurisdiction over civil actions, including business disputes, personal injury, contracts, premises and product liability, general torts, etc. (regardless of amount in dispute).

State Court



Magistrate Court

- Operates 24/7 and 365 days a year.
- Located at GJAC and the Jail Court Annex.
- Provides Judicial Assistance to all other classes of Court.

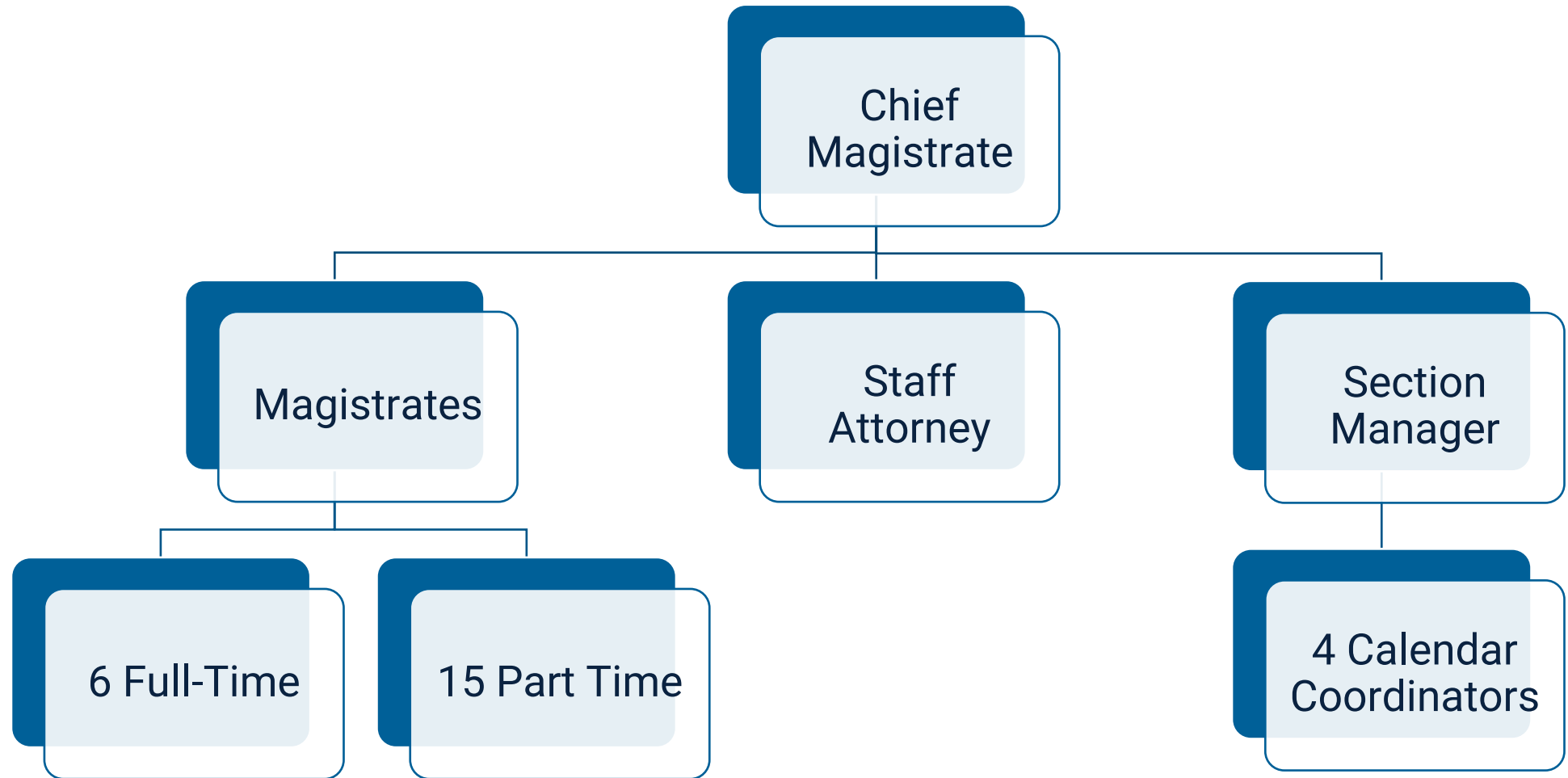
Criminal:

Arrest and Search Warrants
First Appearance Hearings
Committal Hearings
Warrant Application Hearings

Civil:

Civil Claims (less than \$15,000)
Garnishment Actions
Landlord/Tenant Actions
Family Violence/TPOs

Magistrate Court



Administrative Office of the Courts



Operational Decisions

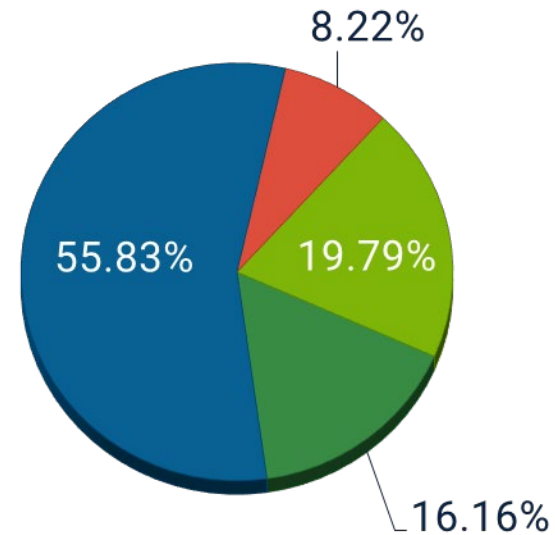
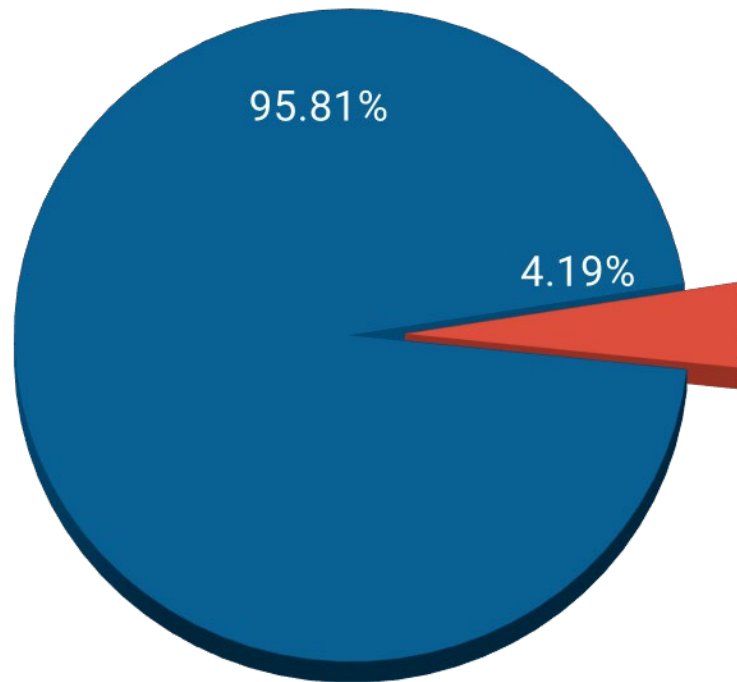
- Increase the use of technology to make the services of the court more accessible, secure, and convenient while maintaining cost-effectiveness.
- Ensure that court facilities accommodate current and future workflow and technology needs.
- Promote timely case resolution by providing optimal resources to all judges and staff, to include the tools needed to operate in a digital court environment.
- Improve communication with the public to provide a better understanding of the issues that affect the delivery of justice.
- Expand cultural awareness and sensitivity training for judges and court personnel.

County Initiatives

- **Safe, Livable, and Healthy Community**
Ensure a safe community by providing superior and comprehensive services and engaging partners to create a healthy Gwinnett.
- **Sustainability and Stewardship**
Maintain a smart and sustainable government by consistently operating based on sound reasoning and best practices with a long-term focus.
- **Organizational Excellence and Accountability**
Maintain the Gwinnett Standard, attract and retain a quality workforce, and continue the practice of transparency while providing services to the residents of Gwinnett.

Percentage of County Budget Utilized by Department

- County Department General Fund
- Superior, State, Magistrate Courts & AOC



- Personal Services
- Operations
- Allocations
- Contributions to Other Funds

Decision Package 1

- Requesting two full-time Court Reporter positions for Superior and State Court.
 - Court Reporters are essential to the operations of the courts.
 - Across the state, courts are experiencing a dire shortage of certified Court Reporters.
 - Full-time positions are needed to enable competitive recruitment of Court Reporters.

Personal Services	General Operating	Total
\$197,733	\$121,180	\$318,913

Decision Package 2

- Requesting a full-time Administrative Support Associate II position for the Jury Division.
 - Since 2012, have utilized the services of a contract staff member on a full-time schedule.
 - In 2020, addition of the 11th Superior Court Judge.
 - In 2022, addition of the 7th State Court Judge.
 - Last year, summoned 96,575 jurors.

Personal Services	General Operating	Total
\$63,610	\$5,445	\$69,055

Decision Package 3

- Requesting a full-time Social Work Coordinator position for the Indigent Defense Program.
 - There is an urgent need for a Social Work Coordinator to link indigent defense attorneys with community resources for their clients to allow for timely case disposition.
 - Throughout the last few years, the Court has experienced a steep decline in the number of criminal defense attorneys practicing in the circuit.

Personal Services	General Operating	Total
\$73,513	\$8,245	\$81,758

Decision Package 4

- Requesting to increase the per diem rate for Bailiffs from \$85 to \$100.
 - Rate was last increased in 2022.
 - Pursuant to O.C.G.A. § 15-12-7, the Judiciary will present a request to increase the rate to the grand jury to be impaneled in September 2023.

Personal Services	General Operating	Total
\$63,514	\$0	\$63,514

Total Budget

Total Requested Budget	\$31,958,123
Decision Packages	\$533,240