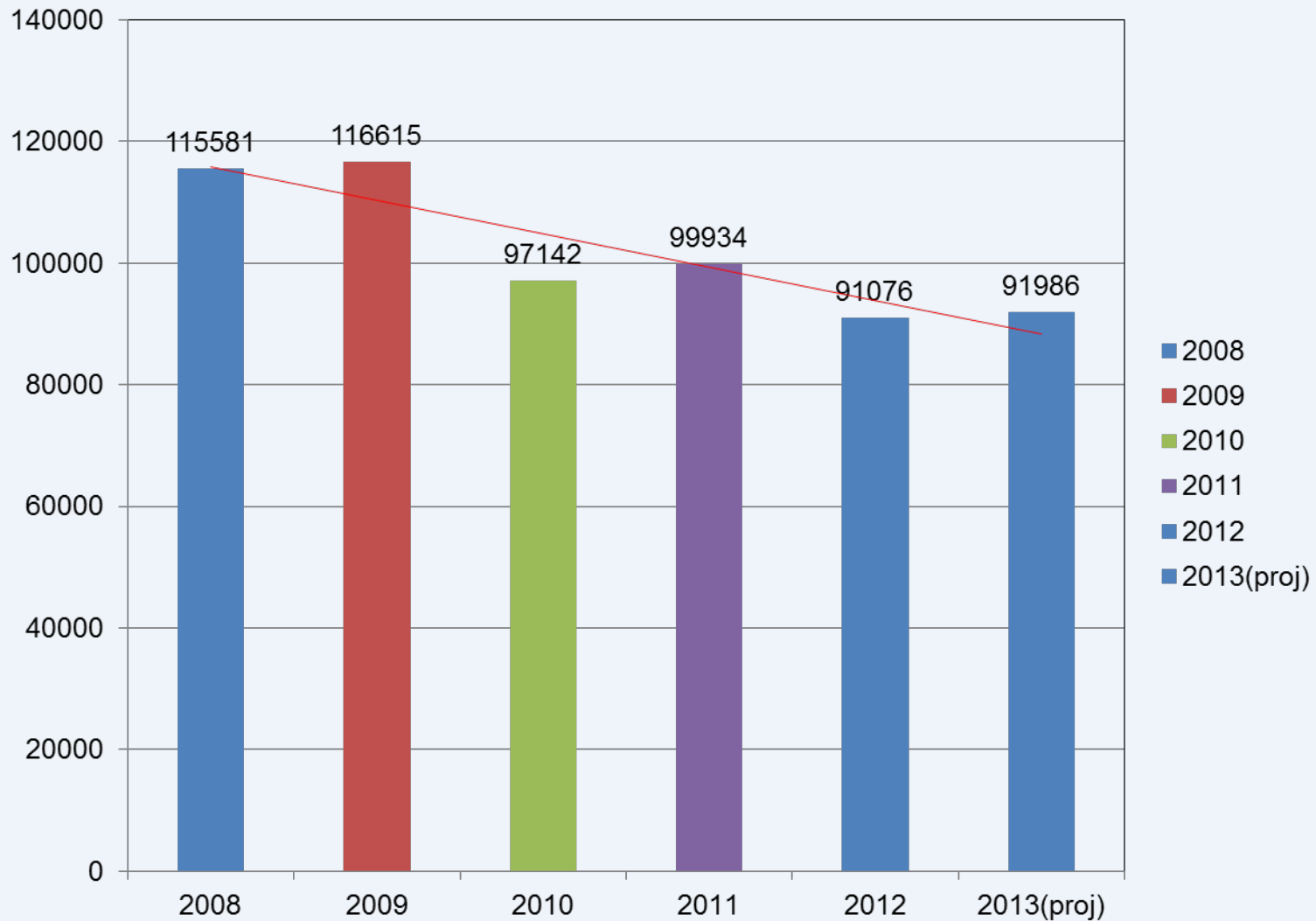


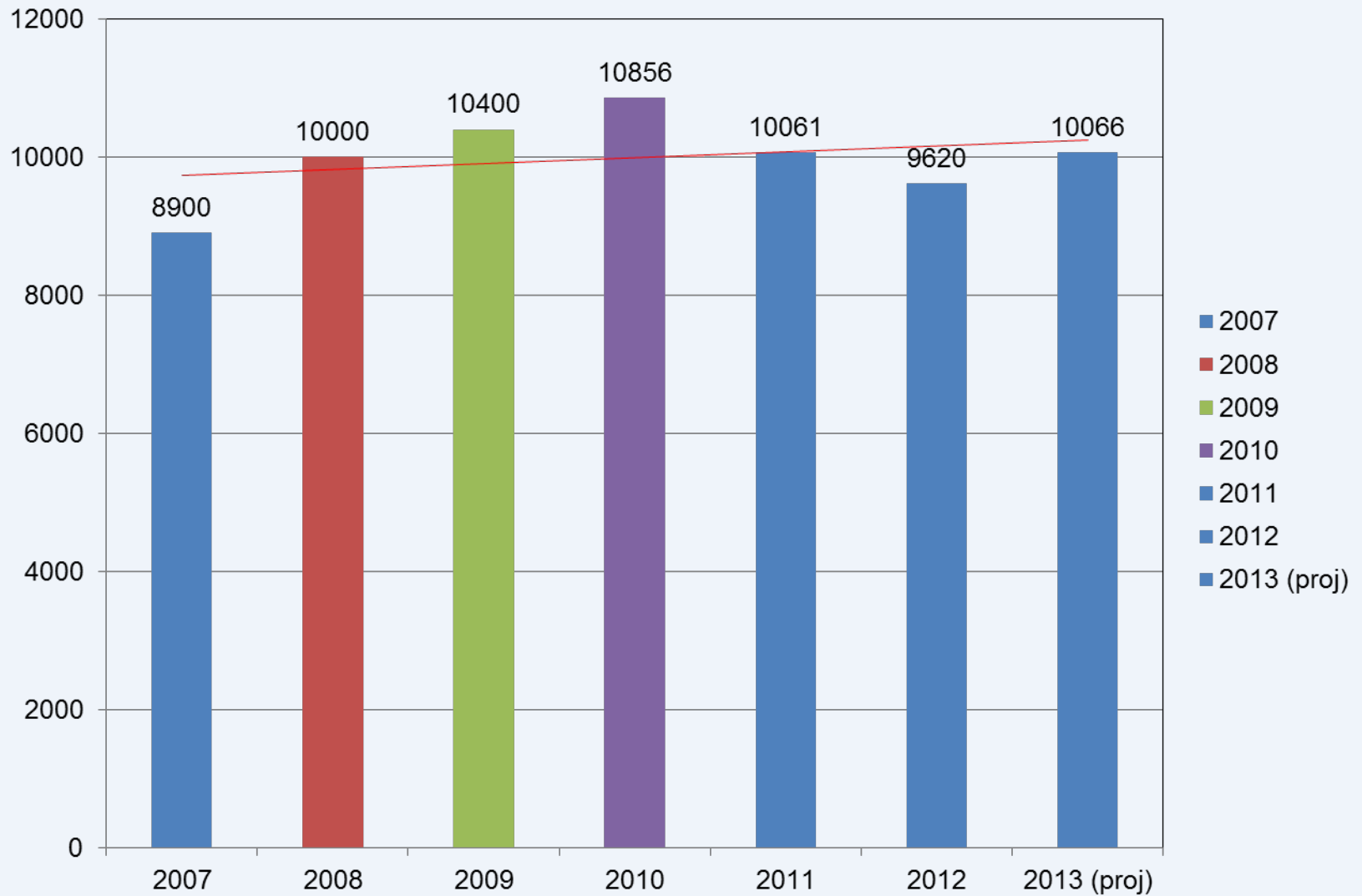


**Gwinnett County Solicitor's Office**  
**2014 Budget Presentation**  
September 5, 2013

# Recorder's Court Citations Received

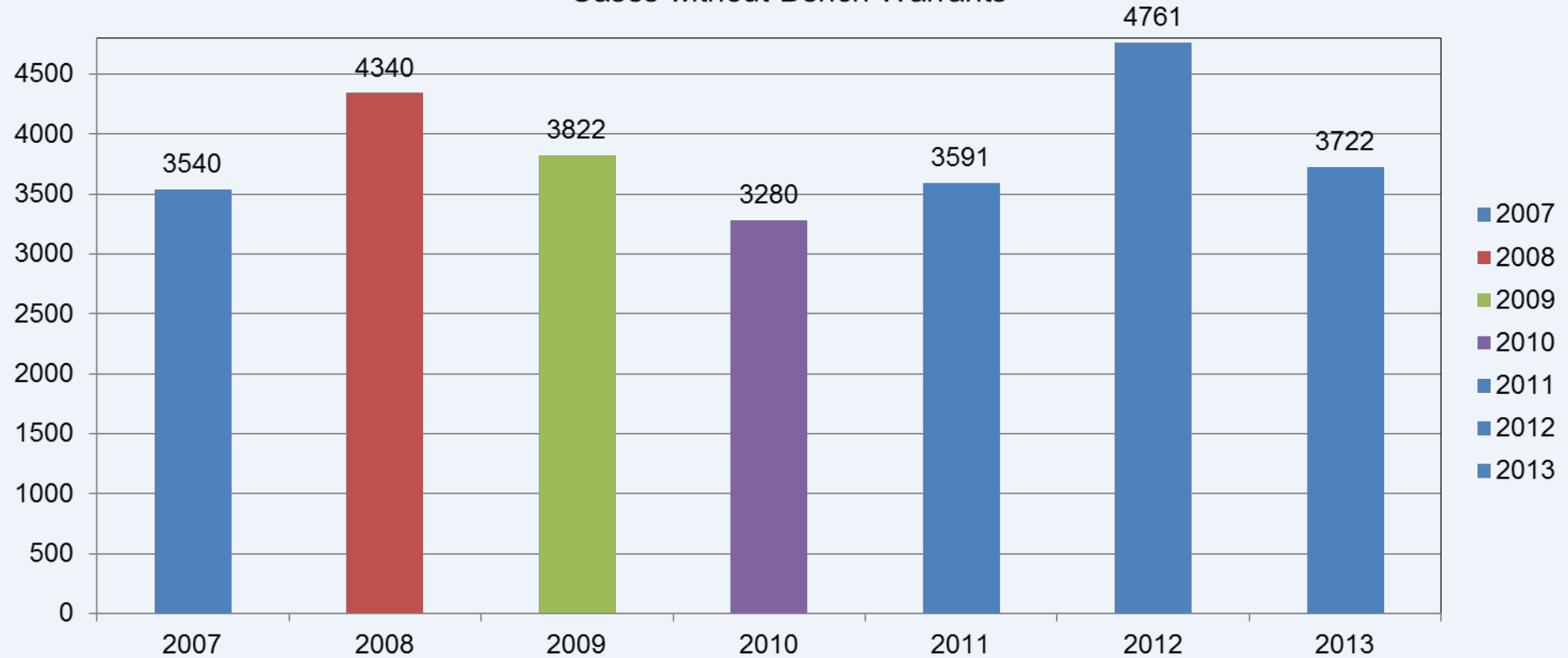


# State Court Cases Received



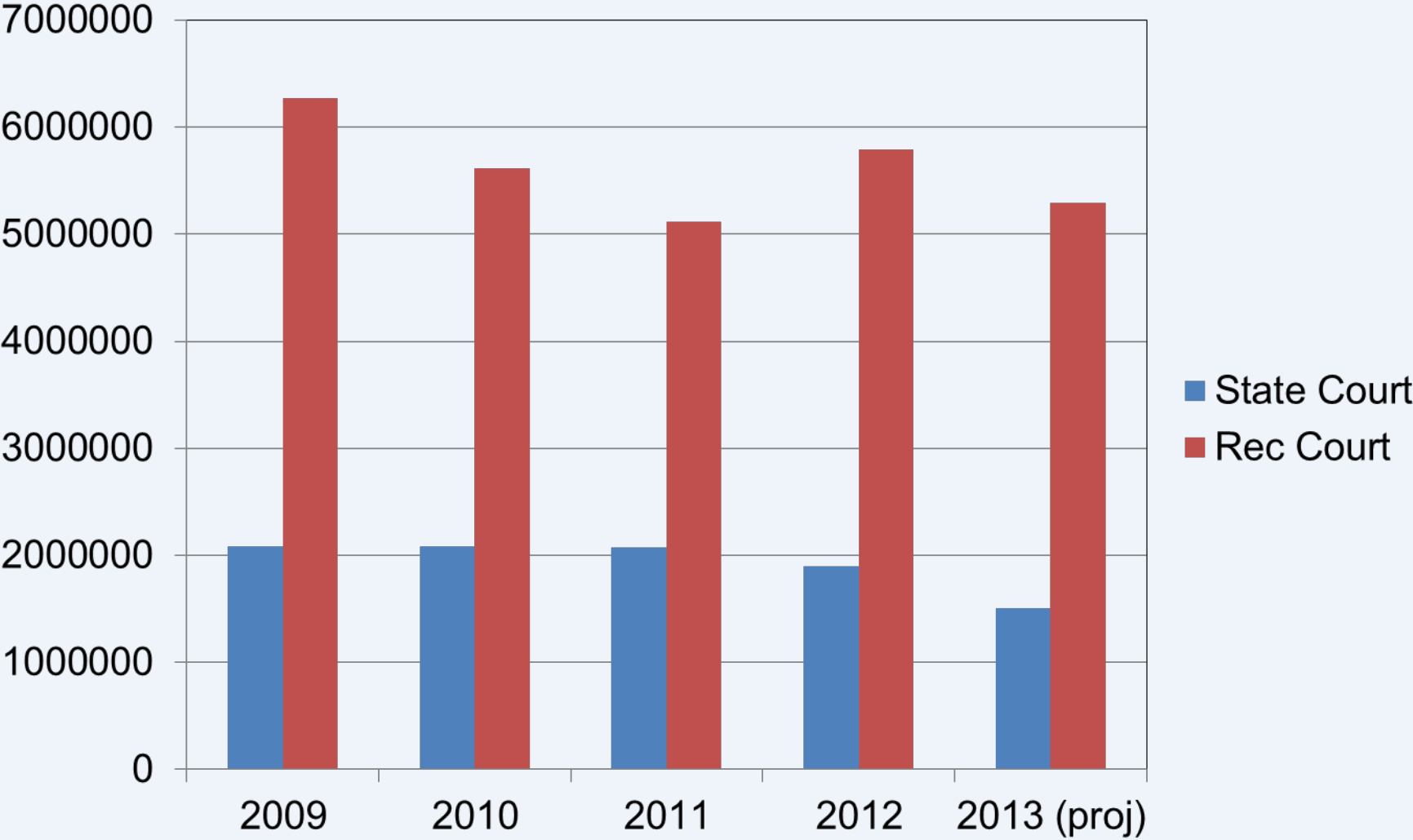
# State Court Pending Cases

Cases without Bench Warrants

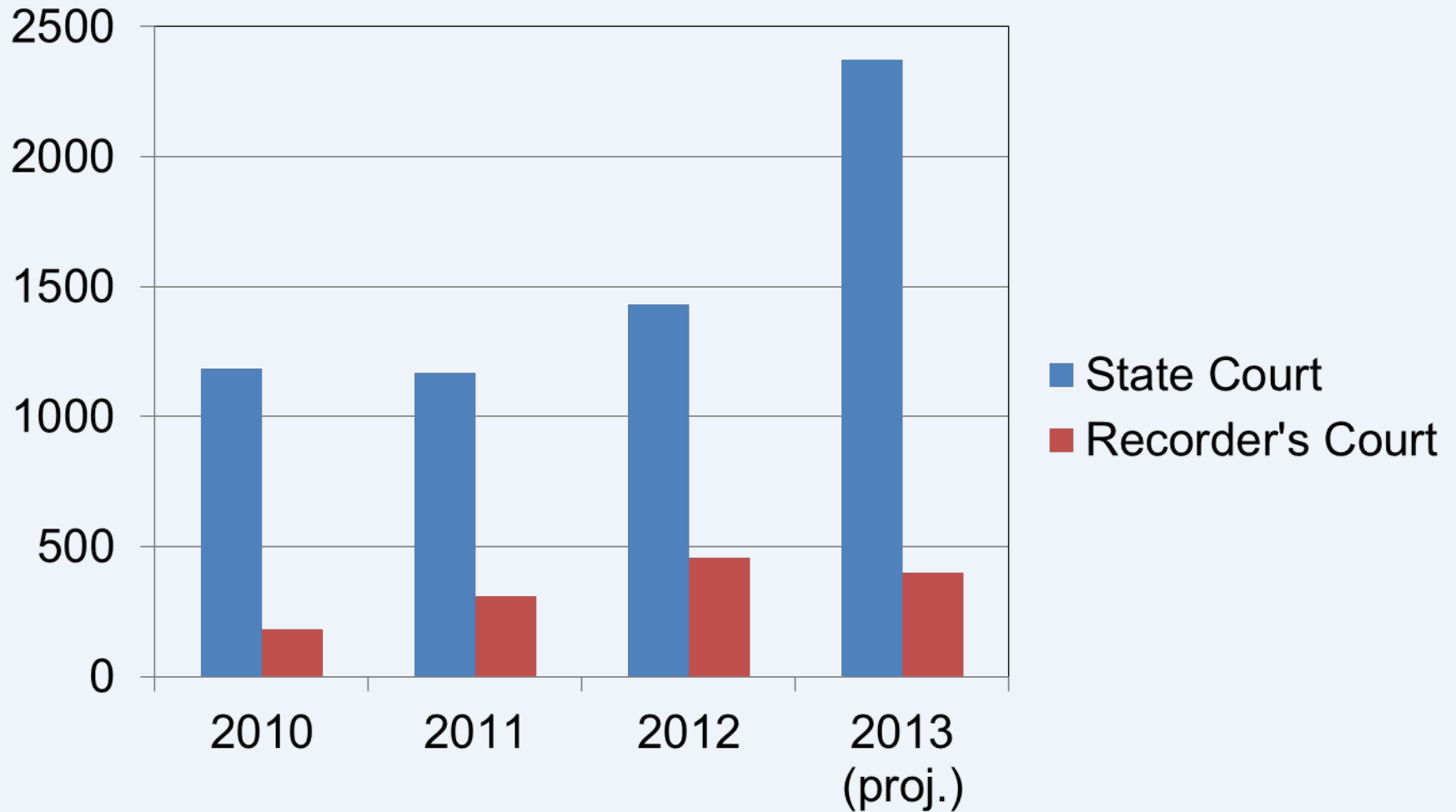


# Revenue From Fines

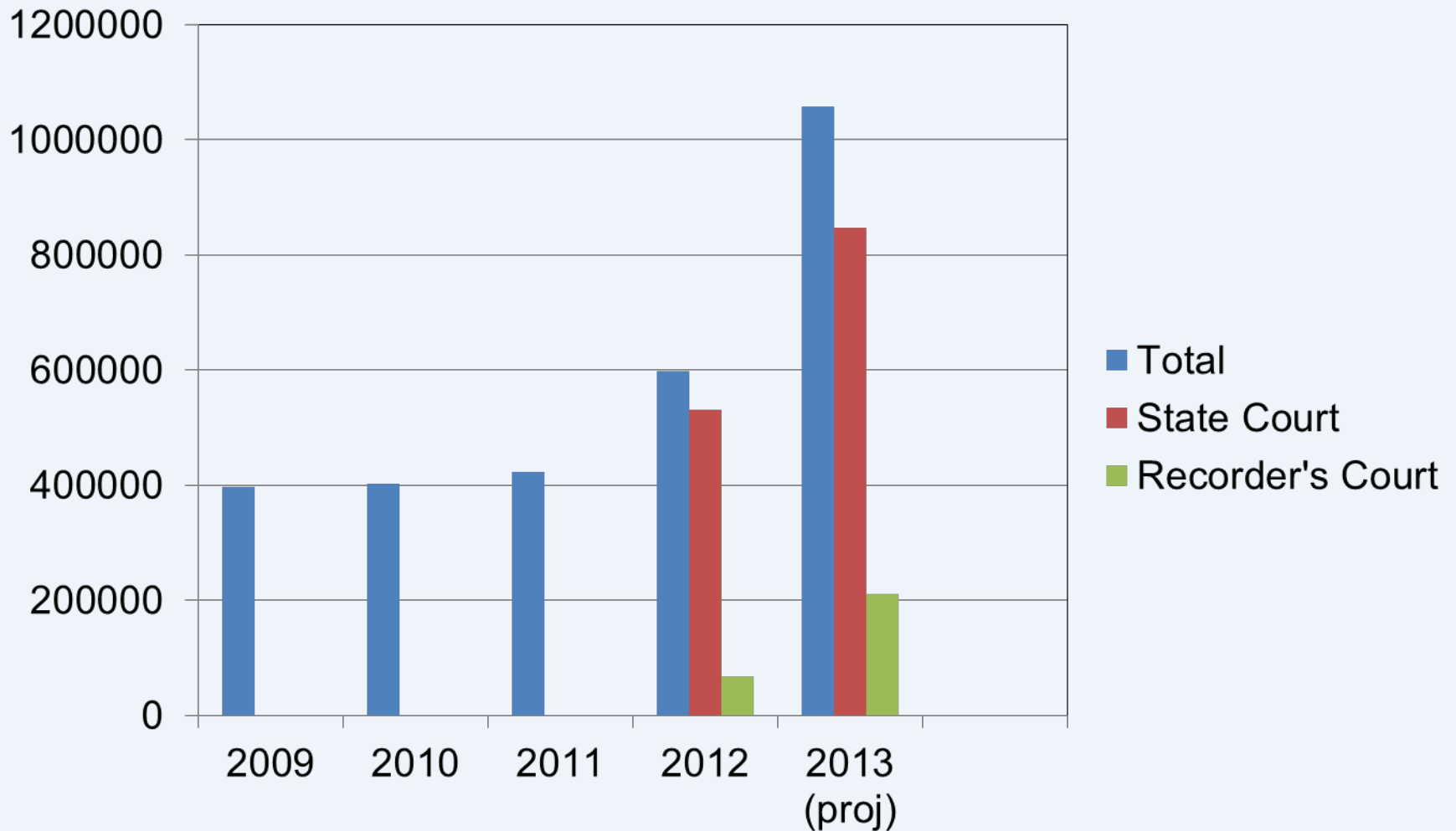
(State Court and Recorder's Court)



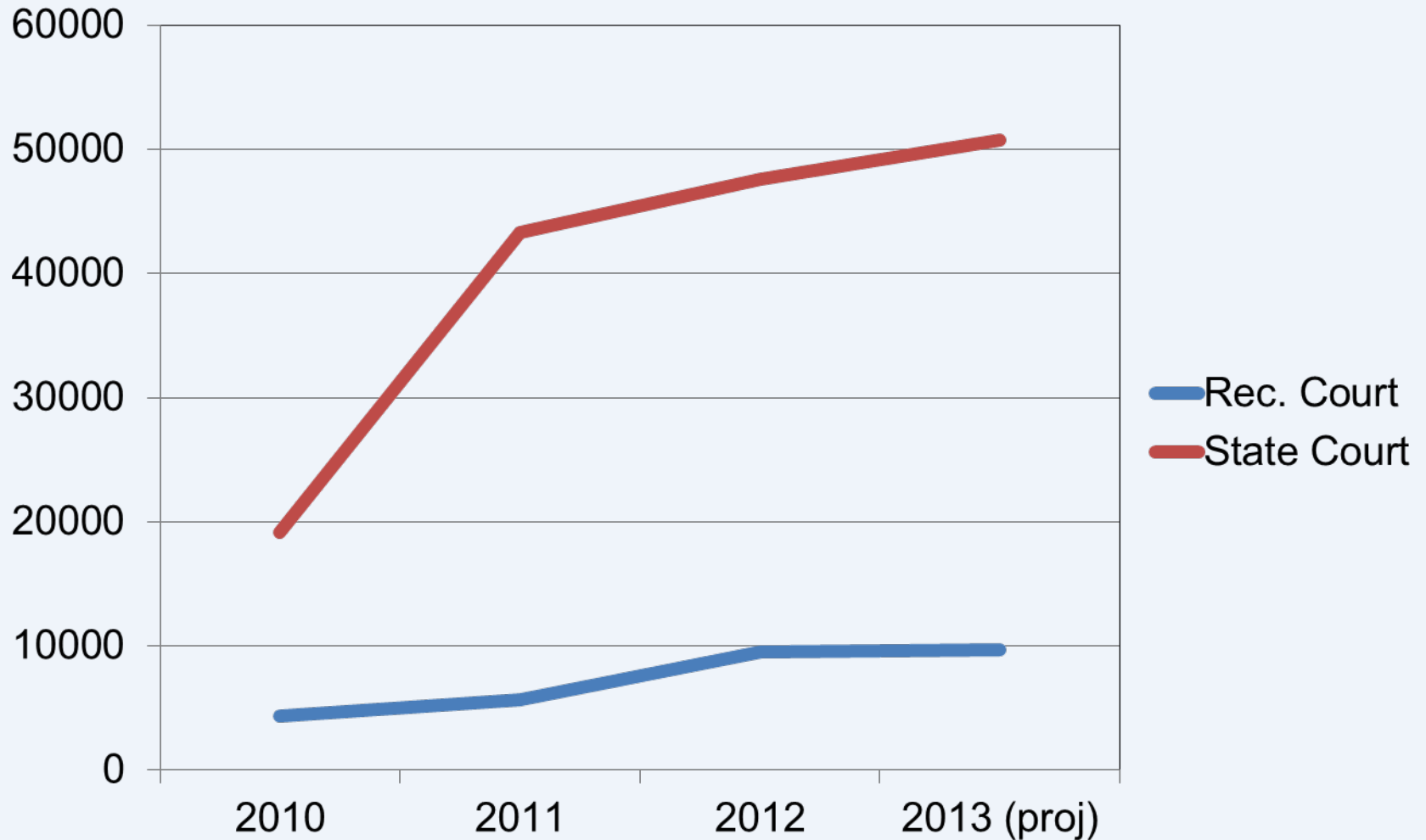
# Pre Trial Diversion Cases



# PTD Revenue (Program Fees)



# PTD Community Service Hours

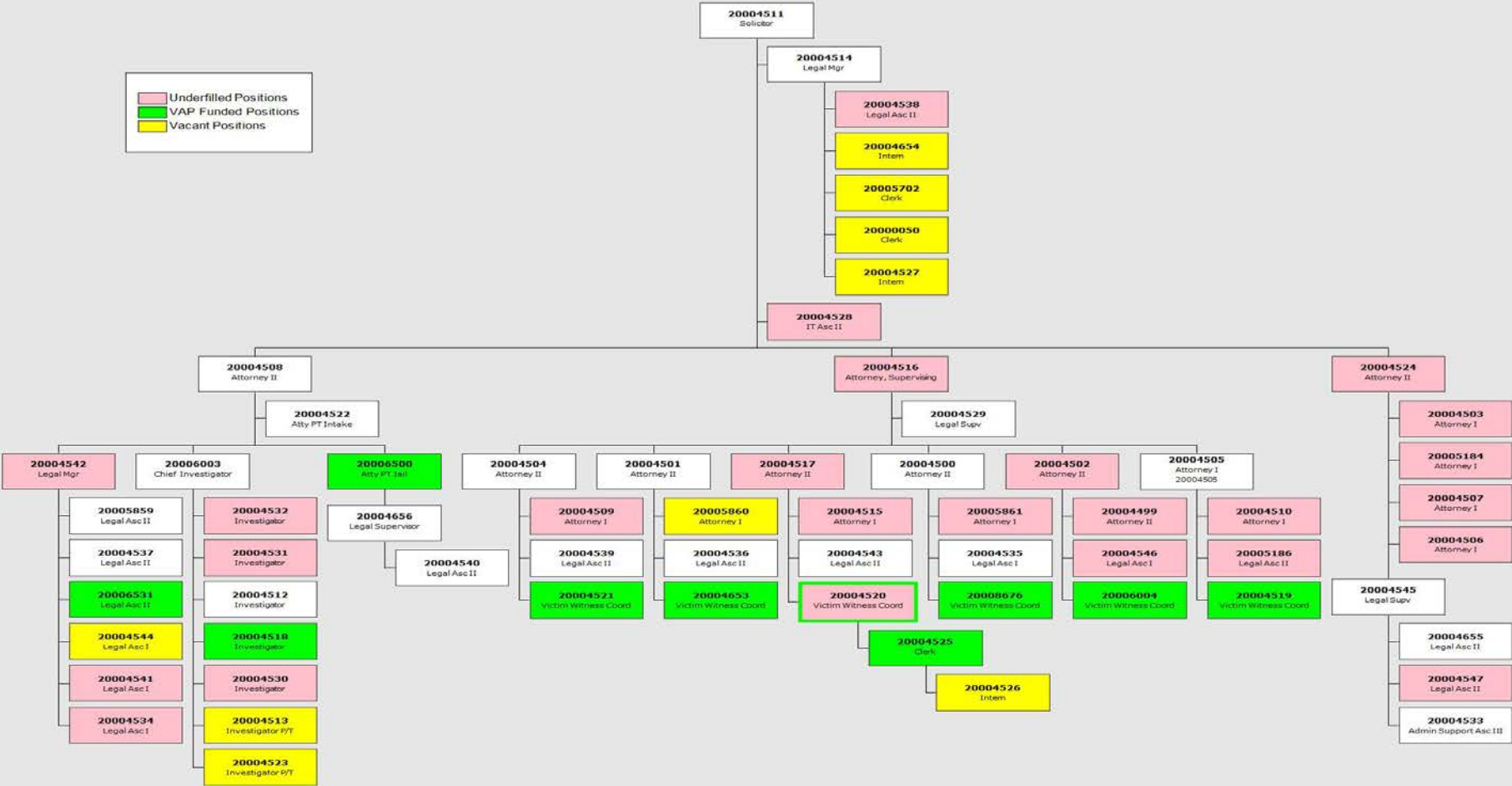




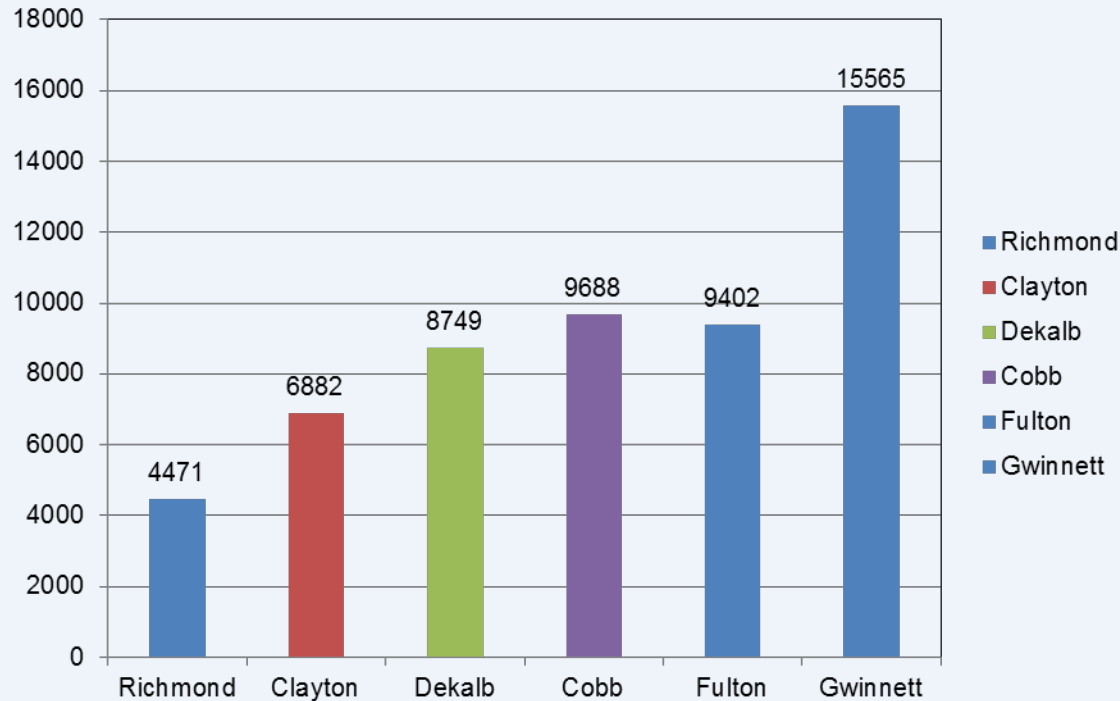
# Organization Chart

SOLICITOR GENERAL'S OFFICE

Underfilled Positions  
 VAP Funded Positions  
 Vacant Positions

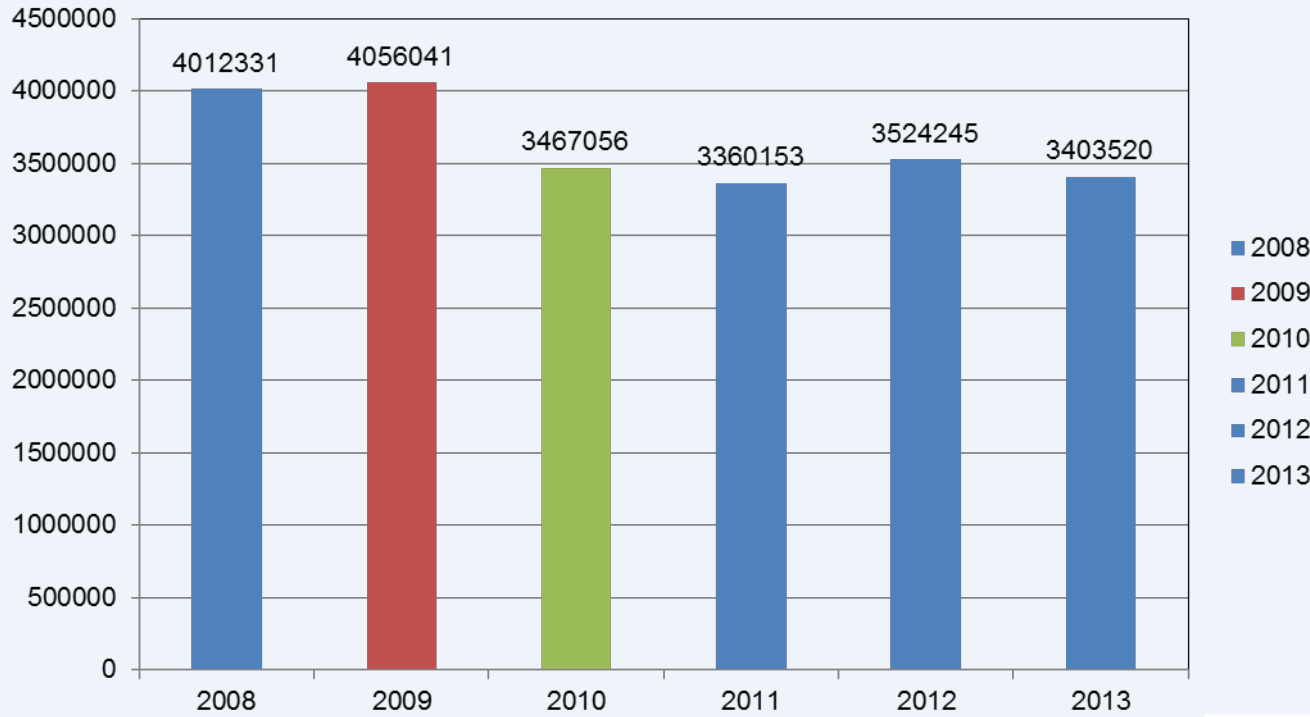


# Staffing Comparison Per Capita



County	Judge	Staff	Population	Per Capita
<b>Gwinnett *</b>	6	53	842,046	15,895
<b>DeKalb</b>	7	80	699,893	8,749
<b>Cobb *</b>	12	72	697,553	9,688
<b>Fulton</b>	10	101	949,599	9,402
<b>Clayton</b>	5	38	261,532	6,882
<b>Richmond</b>	5	45	201,217	4,471

# Personnel Services



Year	General Fund	VAP Fund	Police Fund
<b>2008</b>	3,533,825	478,506	
<b>2009</b>	3,620,159	435,882	
<b>2010</b>	3,078,783	388,273	
<b>2011</b>	2,990,458	369,695	
<b>2012</b>	3,081,550	442,695	
<b>2013(proj)</b>	2,493,081	453,517	456,922